

# My Vehicle Log Book

## Version 2.00

My Vehicle LogBook is an Excel spreadsheet to enter data concerning gas quantities, gas economy, maintenance and miscellaneous costs for my own personal vehicles. Since I bought my Camaro from new it has made it relatively simple as I started entering data from the first day.

What I have found over the years is this, if an accurate record is kept on the vehicle when its time to part with it and especially if you are going to sell it privately, a printout of this record shown to prospective buyers can actually get you more \$\$\$\$ in your pocket. They see a person that obviously looks after their vehicle.

The format I have used is as a spreadsheet (workbook) in Excel. The reason for this is most people have Excel on their computer, it is a very forgiving program and easy to use.

This is obviously not a copyright spreadsheet, however, please do not change and distribute it. If you find something that does not work or if you have an idea to incorporate in it, feel free to email me and I will try to fix it or add it.

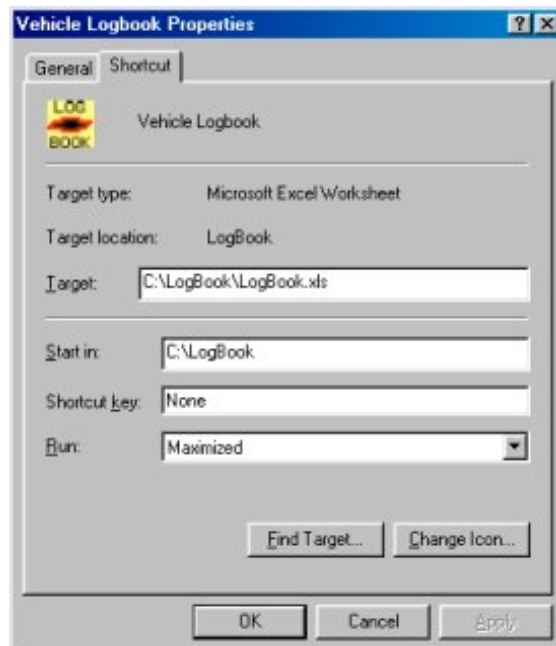
## System Requirements

Windows operating system (I use Win98)  
Microsoft Excel 97-SR1 or better

## Installation

Download the LogBook.exe installation wizard file and execute it. Then just follow the directions on the wizard.

The icon is for your desktop and can be copied over and you can link to 'My Vehicle Log Book' as shown below in FIGURE 1.



## FIGURE 1

### **What Does the Workbook Contain?**

The spreadsheets are actually three spreadsheets in a workbook format and are all inter-related for the gathering of data.

The first spreadsheet is the 'Gas Data Sheet' and formulates total gas cost, total gas usage, total mileage and miles per gallon (including the overall average). See Figure 2.

The second sheet is the 'Maintenance Data Sheet' and it is here where information on servicing, warranty work and modifications can be entered. You can also add registration and insurance costs in here.

The third sheet is the 'Misc. Data Sheet' and it is here where you can add items such as insurance, loan payments etc.

The fourth sheet is the 'Total Costs Sheet' and it is here where all the figures and costs from the other two sheets are displayed. It is also here where you will find convenient print buttons for each of the three sheets.

### **Explaining the Layout and Buttons**

For ease, I have added buttons to facilitate the entry of data.

At the top left of the two data sheets there is an 'ENTRY' button. Click on it and a new entry line is inserted and goes to the date cell

Type in the DATE (i.e. 1-4-00)

Cursor right and type in whatever the item is (Gas is the default)

Cursor right and type in the COST (i.e. 20.00)

Cursor right and type in the GAS AMOUNT in gallons (i.e. 13.342)

Cursor right and type in your MILEAGE (i.e. 324)

Cursor right and the odometer mileage is calculated from the last entry (i.e. 309). At this point your MPG is also calculated (in this case 309) and your overall average MPG is also calculated (in the yellow box) since records were being maintained using 'My Vehicle Log Book'. See the above examples in the actual screen capture below.

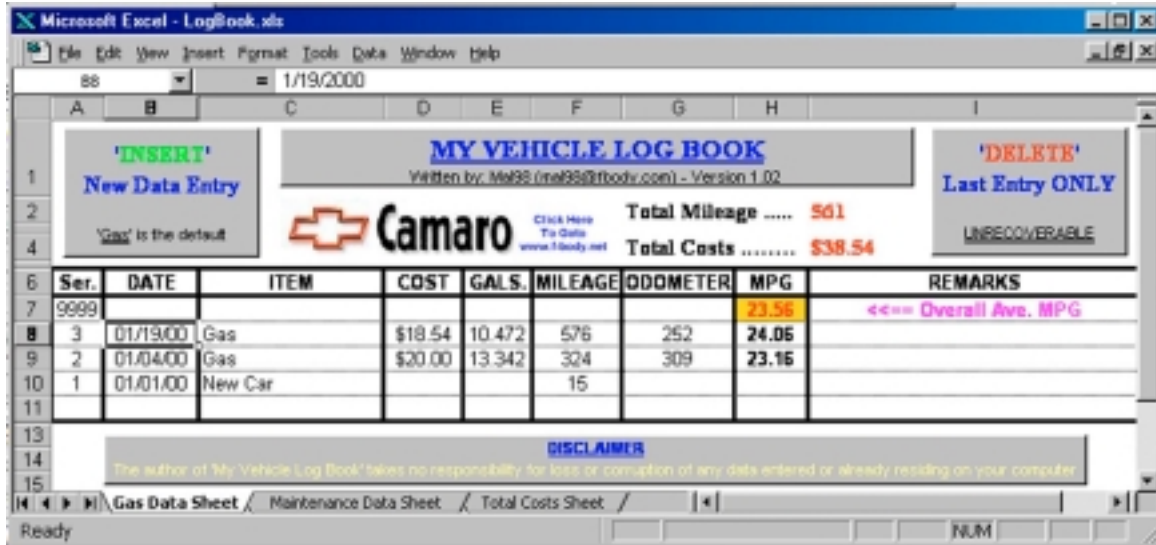


FIGURE 2

The DELETE button on the right side will delete the last entry line and the truth is, it is sort of recoverable. If you do happen to delete one or more line of data, exit out of the spreadsheet and when ask to save, DON'T. Easiest way to ensure you don't loose all your information is to back it up to floppy. We all back up are important data regularly don't we...? Yeah right!

### A Few Extra Notes on Accuracy

Accuracy is only as good as the data input and so when you gas up always top the tank right up. I usually record the details at the gas station and enter them when I get home (my memory just doesn't cut it these days).

If you require any assistance you can email me at Mal98@fbody.com but I really don't support this. Let's face it folks, the fact is that it is pretty darn basic to use.

### Feedback

I have a feedback button on the Totals page. Clicking on this icon will take you to the feedback / survey page on my LogBook site and just fill in the form and submit it. You may do this anonomously, I would just like your comments or ideas on My Vehicle LogBook for possible inclusion on later versions, etc.

### Version History

- Version 2.00 : 3/15/02 : Added a misc. sheet and a feedback button on the totals sheet
- Version 1.02 : 8/31/00 : It appears I left out the 'PRINT' macros and these have now been added.
- Version 1.01 : 9/28/99 : Added an icon to put on your desktop (Chevy logo of course).
- Version 1.00 : 3/12/99 : The finished product, but there is sure to be something I missed.